

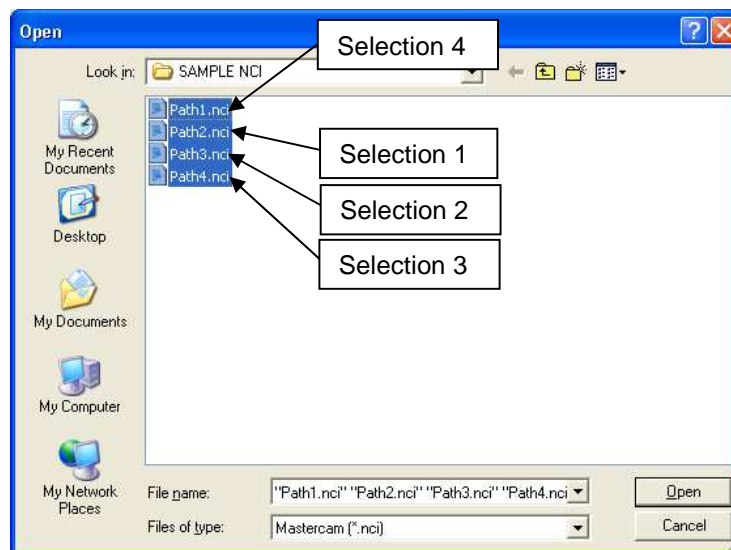
1.0 Overview

This document explains how CAMplete TruePath organizes tool paths (operations) into NC Programs. CAMplete TruePath creates a NC Programs consisting of 1 or more tool paths and operations. Each NC Program is intended to correspond to one NC Program on the milling machine. It can have as many tool paths and tool changes as required. It is also possible to reorder and move operations from one NC Program to another.

2.0 Importing Multiple CAM Files Into a Single NC Program

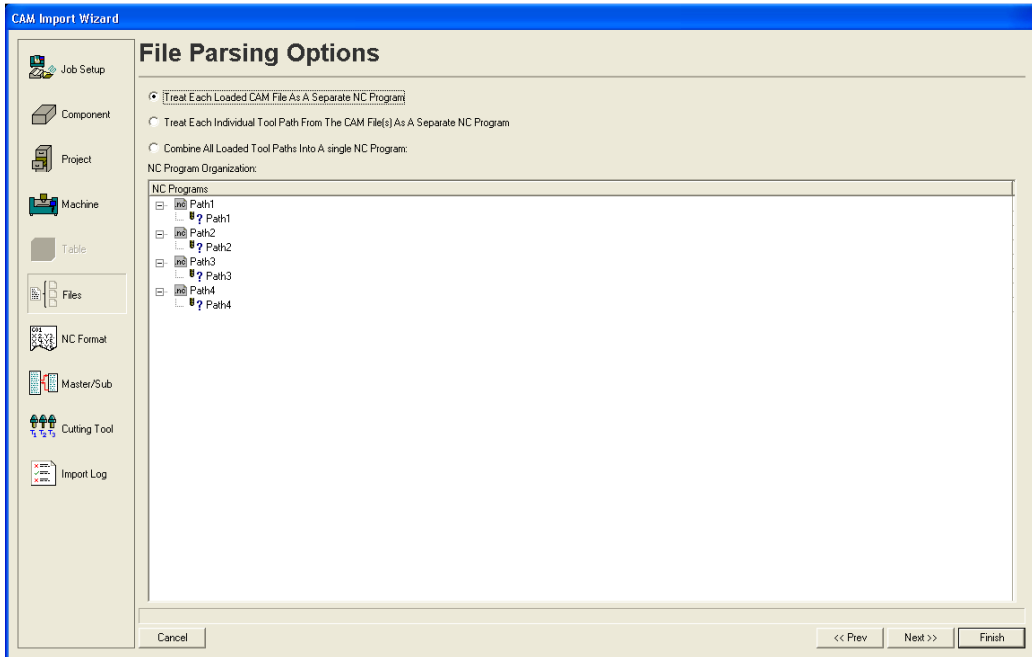
In many instances CAM systems can produce multiple CAM files which you may want to load as a single program. In this case, you can do this using the **Files** page of the Import wizard. In this example, we will import 4 tool paths called Path1.nci, Path2.nci, Path3.nci and Path4.nci. We want to turn them into a single NC Program. Here are the steps you would follow:

- (1) Start the CAMplete TruePath application
- (2) Click **File > New** (Since we want to import these files together, we first need to create a blank document.)
- (3) Click **File > Import**. This will display the Open File dialog
- (4) Select the files that are being loaded. Note that because of the way the Windows File System works, you need to select the *second* path first, then the *third* all the way to the last path and finally the *first* path.



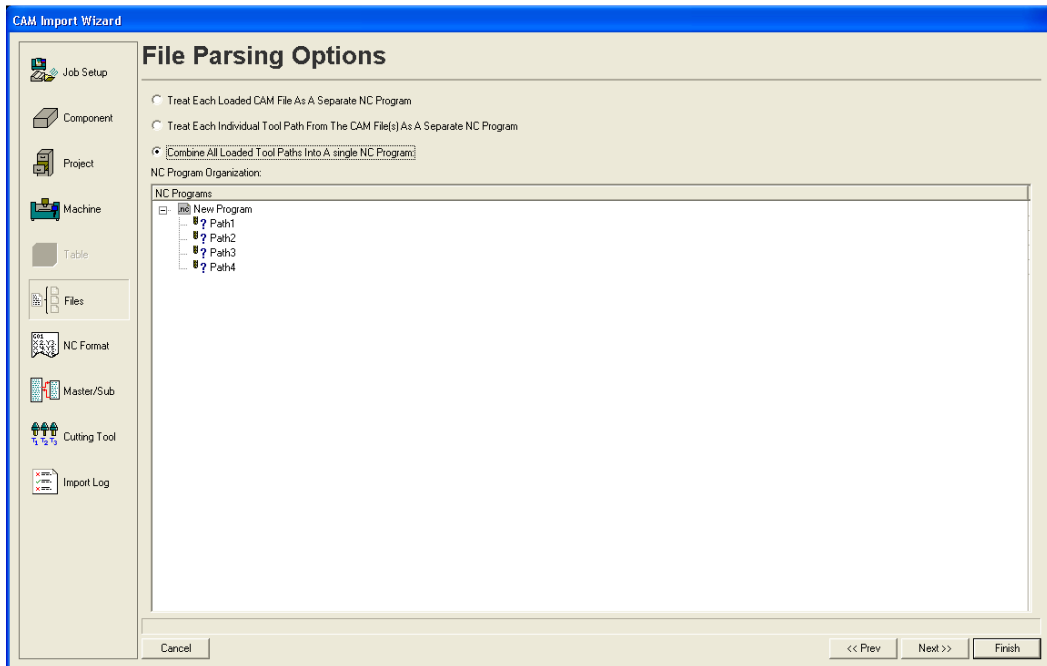
- (5) When you have selected your NCI files, click **Open**

(6) Now in the **CAM Import Wizard** click **Files**. This will show the Files page:



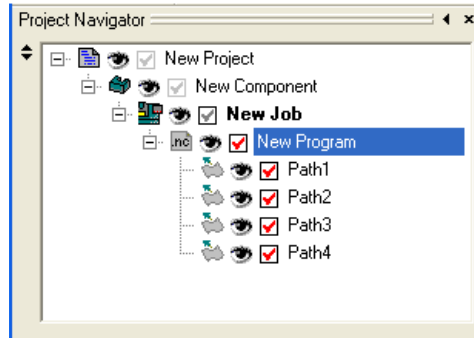
(7) If you choose **Treat Each Loaded CAM File As A Separate NC Program** as the option, you will get 4 NC Programs, one for each NCI file that you loaded

(8) If you choose **Combine All Loaded Tool Paths Into A Single NC Program** it will created a single NC Program with the 4 tool paths in order:



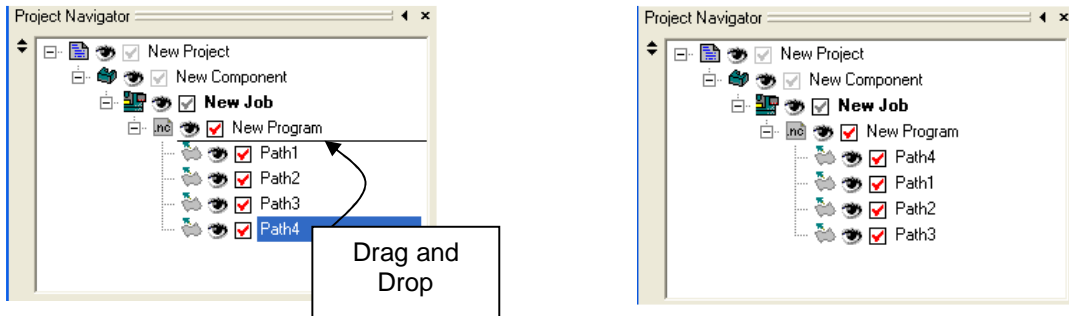
(9) Click **Finish** to complete the import process

(10) You should now have all 4 paths as a single NC Program in your Project tree:



3.0 Moving Paths Within NC Programs

Once you have imported your tool paths and created your NC Programs, you can still change their structure. You can do this by “dragging and dropping” the paths within the main project tree. You can move a path from one NC Program to another, or you can reorder a path anywhere in a program. For example, to move Path4 to the beginning, simple click it and drag it to the beginning of the NC Program:



After completing the reorder the program will be re-posted with the correct tool changes etc.