

Working with MasterCAM Datums

November 2006

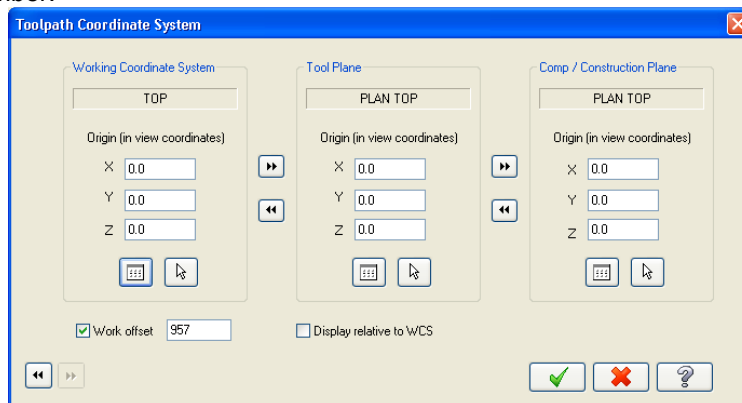
1.0 Overview

This document explains how to import datum information from MasterCAM into CAMplete TruePath and how to post the CAMplete paths relative to that datum

2.0 MasterCAM Setup

In MasterCAM you must select the appropriate datum for each tool path (operation). To do this, g

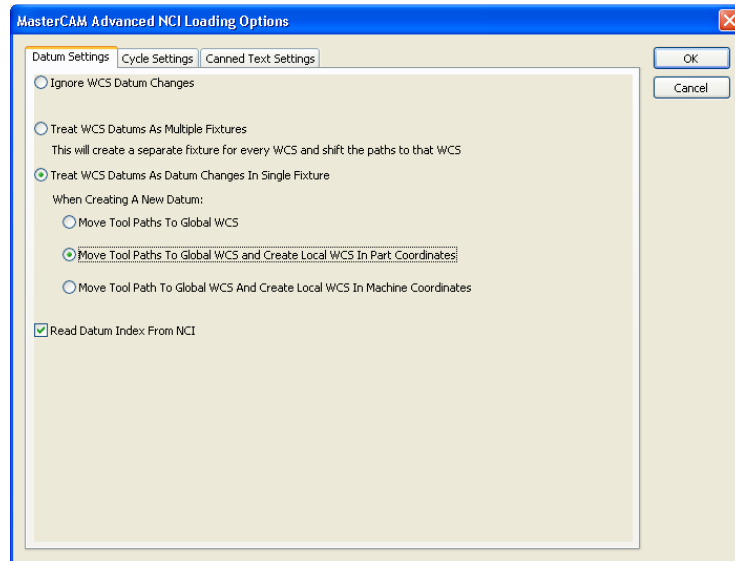
- 1) In MasterCAM, go to the Parameters for the operation
- 2) Click Planes...
- 3) In the Planes dialog select the appropriate "view" for your Working Coordinate System. You can also type in the offset number.



- 4) Now when you create an NCI file, the datum information will be used.

3.0 Setting Up CAMplete TruePath

- 1) Start the CAMplete TruePath software
- 2) Go to Tools > Options
- 3) Click File Types
- 4) Select Mastercam and click "Advanced Properties"
- 5) In "Datum Settings", enable "Treat WCS Datums As Datum Changes In Same Fixture"
- 6) Enable "Move Tool Paths To Global WCS And Create Local WCS In Part Coordinates"
- 7) Enable "Read Datum Index From NCI"



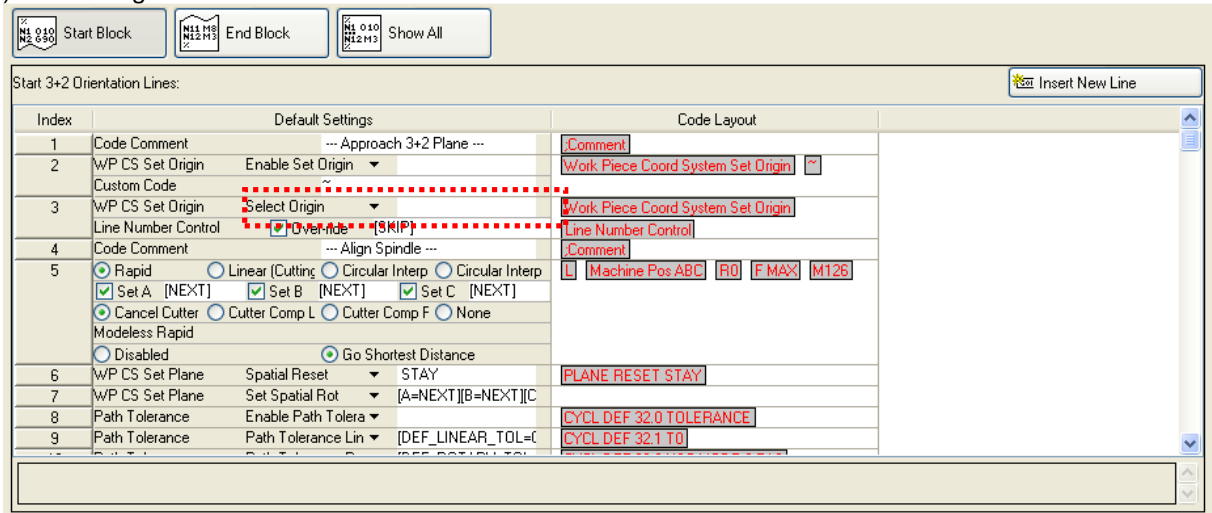
- 8) Close the dialog
- 9) Close the CAMplete TruePath application

Working with MasterCAM Datums

November 2006

4.0 Setting Up The NC Formats

- 1) Start the CAMplete TruePath software
- 2) Go to Tools > NC Format Editor
- 3) Edit the NC Format section that contains your datum setting command code
- 4) Ensure that the option is set to "Select Origin"
- 5) Close the NC Format Editor
- 6) This change needs to be made for all NC Formats



Now when you load an NCI file with the datums selected, you will get a new datum for each individual one in the NCI file. Furthermore, each path will be posted to that datum. The datums can be viewed on the Coord Sys page of the CAM Wizard. For example:

