

Importing Heidenhain iTNC Parameter Files

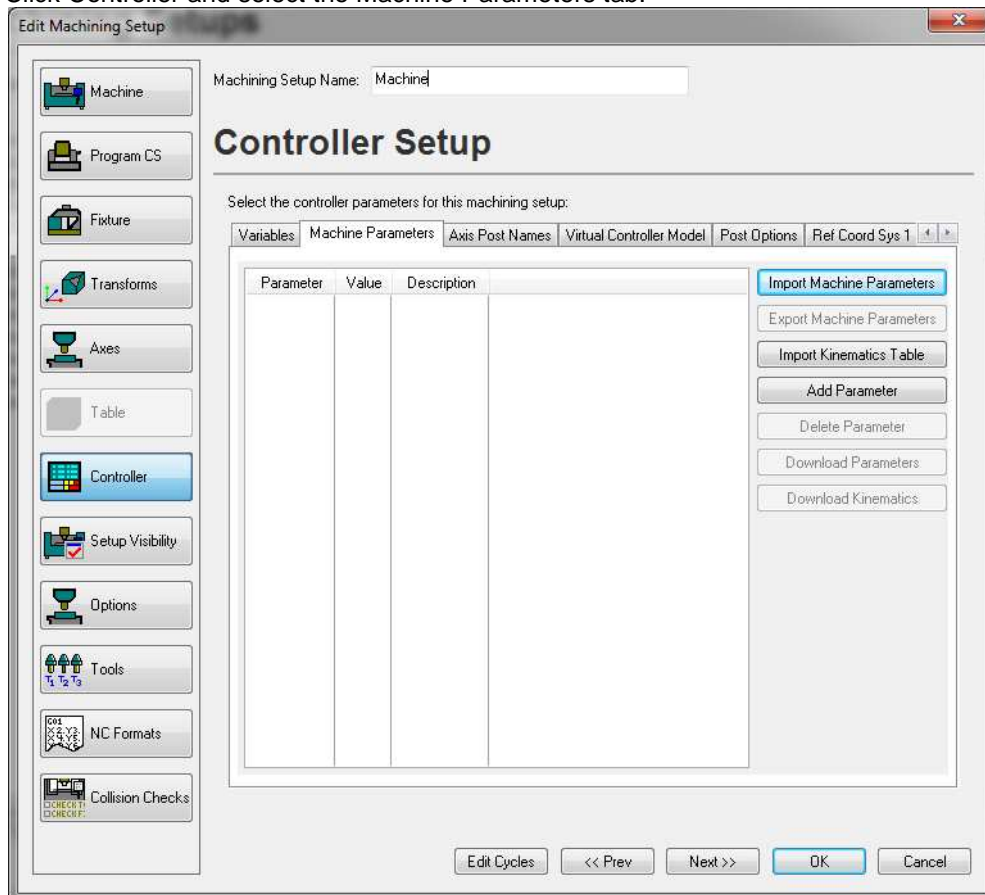
1

March 3, 2009

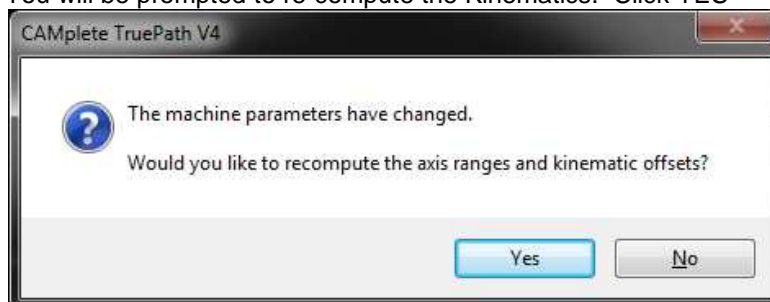
1.0 Importing Heidenhain .MP and .TAB Files

This document explains how to import Heidenhain .MP and .TAB files into a machining setup inside of CAMplete TruePath.

1. Start CAMplete TruePath
2. Go to Resources > Machining Setup Manager
3. Select your machine in the grid
4. Hold the SHIFT key on the keyboard and click EDIT
5. Answer NO if you are prompted about searching for TNCRemo
6. Click Controller and select the Machine Parameters tab:

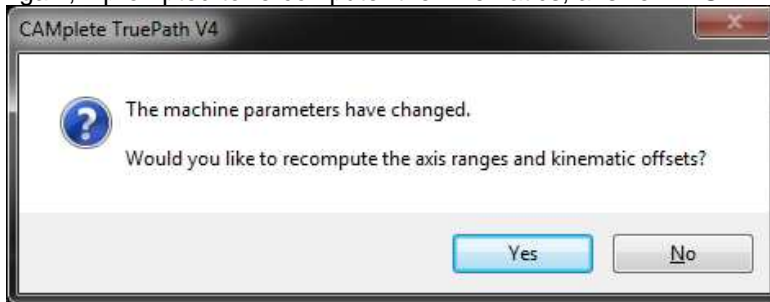


7. Click Import Machine Parameters
8. Answer NO if prompted about backing up the existing MP values
9. Select the .MP file for this machine
10. You will be prompted to re-compute the Kinematics. Click YES



11. Click Import Kinematic Table
12. Select theTAB file for your machine

13. Again, if prompted to re-computer the kinematics, answer YES



14. Close the Machining Setup Editor
15. Answer YES if prompted about overwriting the existing setup file