

Selecting NC Formats

January 17, 2008

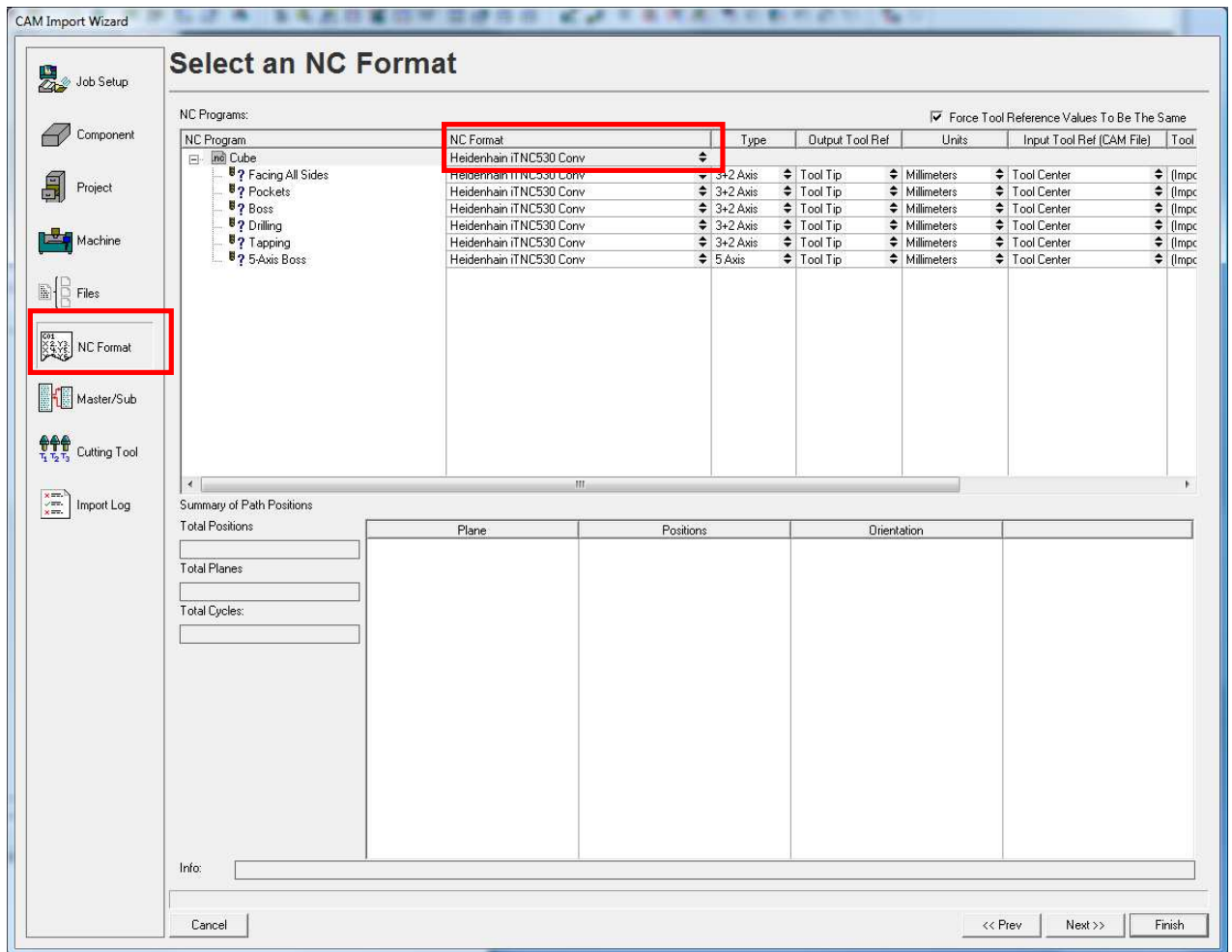
1.0 Overview

This document explains how to select NC Formats.

2.0 Importing a File

To select an NC Format when IMPORTING a CAM File:

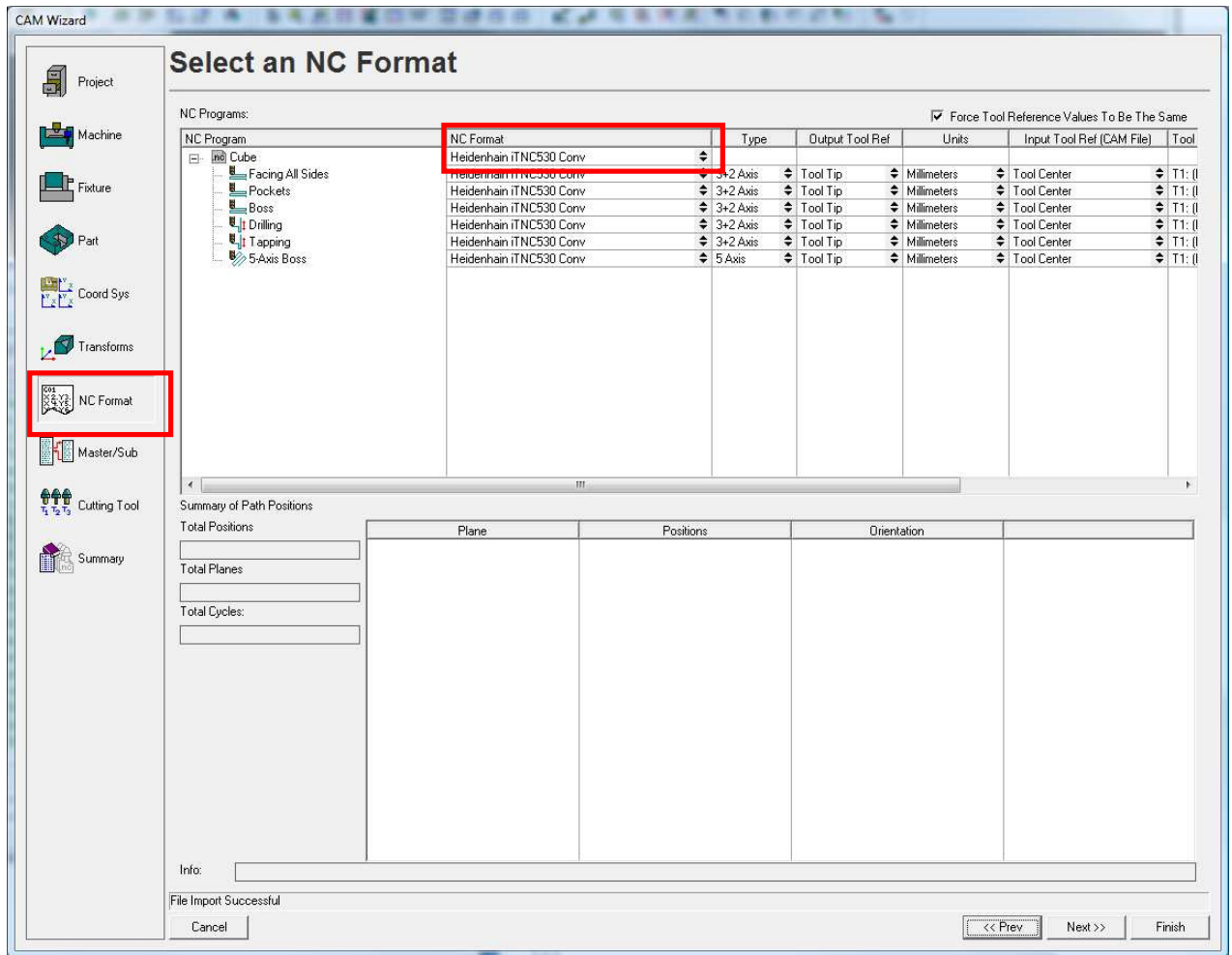
1. Click NC Format in the CAM Import Wizard
2. Use the drop list in the NC Format column to select the new format
3. Complete the rest of the wizard as required



3.0 Changing The NC Format From the CAM Wizard

To select an NC Format click on CAM Wizard in the main document window:

1. Click NC Format in the CAM Wizard
2. Use the drop list in the NC Format column to select the new format
3. Complete the rest of the wizard as required



4.0 Setting A Default NC Format

1. Start CAMplete TruePath
2. Go to Resources > Machining Setup Manager
3. Select your Hermle machining setup and Click EDIT
4. Go to the NC Format page
5. Select your Heidenhain NC Format as the default
6. Click Ok to close the editor
7. Answer Yes when prompted about overwriting your file

