

Using CAMplete TruePath with Heidenhain TNCRemo

1

February 2011

1.0 Using CAMplete TruePath with Heidenhain TNCRemo

CAMplete TruePath allows you to upload your posted programs directly to your milling machine equipped with a Heidenhain TNC control. Currently this feature is only available on machines that are so equipped.

In order to upload your NC programs directly to your Heidenhain controller from within TruePath, the following conditions must be met:

- 1) TNCRemoNT must be installed on the PC running CAMplete TruePath
- 2) Your machine and your PC must be connected to the same network and must be able to communicate using TNCRemoNT
- 3) Your TruePath Machining Setups must be configured with your Machine Tool's IP address
- 4) The 'Upload' feature must be activated within TruePath

The rest of this document will help to guide you through a setup process that will ensure all of these conditions are met.

Sections 2 and 3 are provided as general overviews only. Support for these Steps is provided by your machine tool manufacturer.

2.0 Installing TNC Remo

TNCRemoNT is an application provided by Heidenhain to allow communications between your Machine's control and your PC. CAMplete TruePath requires some features installed with this software in order to upload NC programs directly to your machine.

If you already have TNCRemoNT, proceed to Section 3.0. If you do not already have Heidenhain TNCRemoNT installed you will need to download and install it.

Please consult the Heidenhain website at <http://www.heidenhain.com> to find the latest version of TNCRemoNT.

Once you have downloaded TNCRemoNT, you will need to unzip the archive and run `Setup.exe`. This will launch the Install Shield wizard that will guide you through the installation and setup of the Heidenhain software.

Should you run into any problem downloading or installing this software please contact your machine tool manufacturer for assistance.

3.0 Connecting to the Network

In order to upload programs directly to your machine tool the PC running CAMplete TruePath and the Heidenhain control must be able to communicate using your local network.

To complete Section 4.0 you will need to know the IP address of the Heidenhain controller on your machine. An IP address is 4 numbers in the range 0-255 separated by periods (for example 192.168.0.100).

If you are unfamiliar with IP addresses or networking, please consult with the person in charge of your network to find the necessary address. Your machine tool manufacturer may also be of assistance to you in finding this address on the machine itself.

4.0 Configuring Your Machining Setups

In this step you will configure your CAMplete TruePath machining setups with the IP address you found in Section 3.0.

- 1) Open the Machining Setup Manager (figure 1) by Selecting 'Milling Machines->Edit/Create Machining Setup' from the 'Resources' menu in CAMplete TruePath
- 2) Select a Predefined Machining Setup that corresponds to your machine tool
- 3) Click 'Edit' to open the Machining Setup Editor (figure 2)
- 4) Click 'Controller' to access the parameters for your Heidenhain Controller
- 5) Click the 'Remote Access' tab to edit the Machine's IP address
- 6) In the 'IP Address' field enter the address you found in Step 2
- 7) Click 'OK' to close the editor and save your changes
- 8) When prompted about overwriting an existing file, click 'Yes' or your settings will not be saved
- 9) Repeat steps 1-7 for each setup you would like to be able to use to upload NC Programs

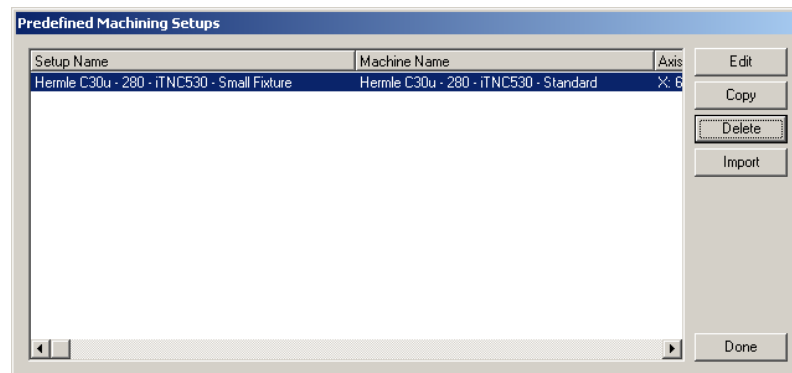


Figure 1: Machining Setup Manager

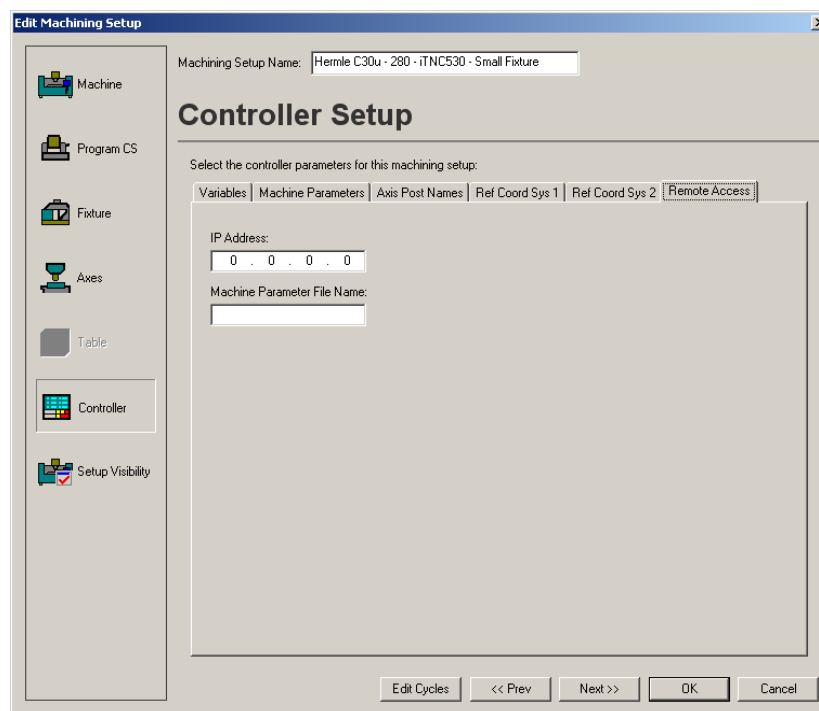


Figure 2: Machining Setup Editor

5.0 Activating CAMplete's 'Upload' Feature

Before you can make use of CAMplete TruePath's upload feature you must edit your preferences to display the Upload button in the tool path editor. Follow these steps:

- 1) Open the User Preference Manager (figure 3) by selecting 'Options' from the 'Tools' menu
- 2) Click 'Advanced' and 'OK' when the warning appears
- 3) Find the 'Tool Path Editor' folder, open it and select 'Show Upload Button'
- 4) Make sure the check box that appears is checked
- 5) Click 'Done'
- 6) Save any open documents and close CAMplete TruePath
- 7) Restart the application

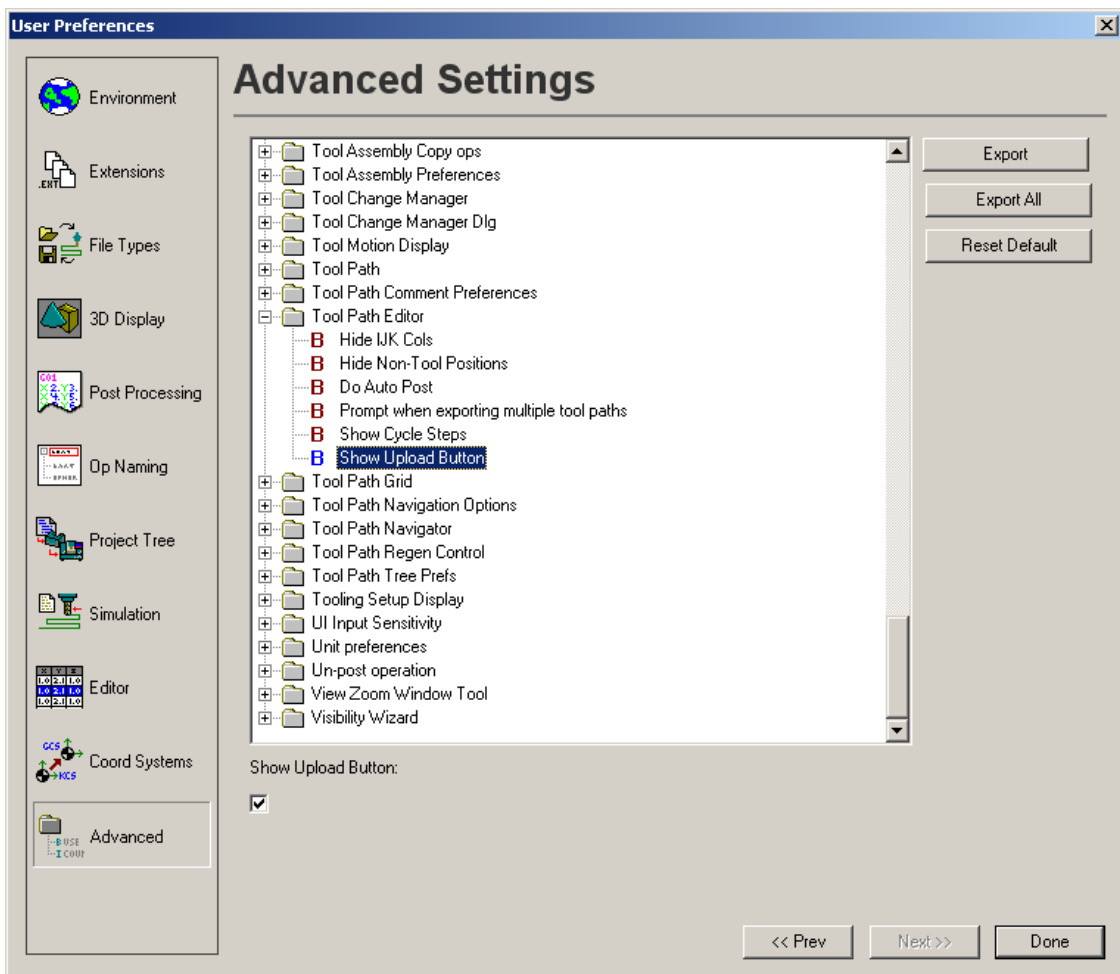


Figure 3: User Preference Manager

6.0 Uploading Files

The next time you open TruePath you will see an 'Upload' button (figure 4) on the tool path editor along with the standard 'Export APT' and 'Export GCode' buttons.

Using CAMplete TruePath with Heidenhain TNCRemo

4

February 2011



Figure 4: The Upload Button

Open a file containing programs you are ready to upload to your machine tool. Navigate to the tool path editor and click 'Upload'. If you have properly set up TNCRemoNT, your machining setups, and TruePath you should see the Upload dialog (figure 5).

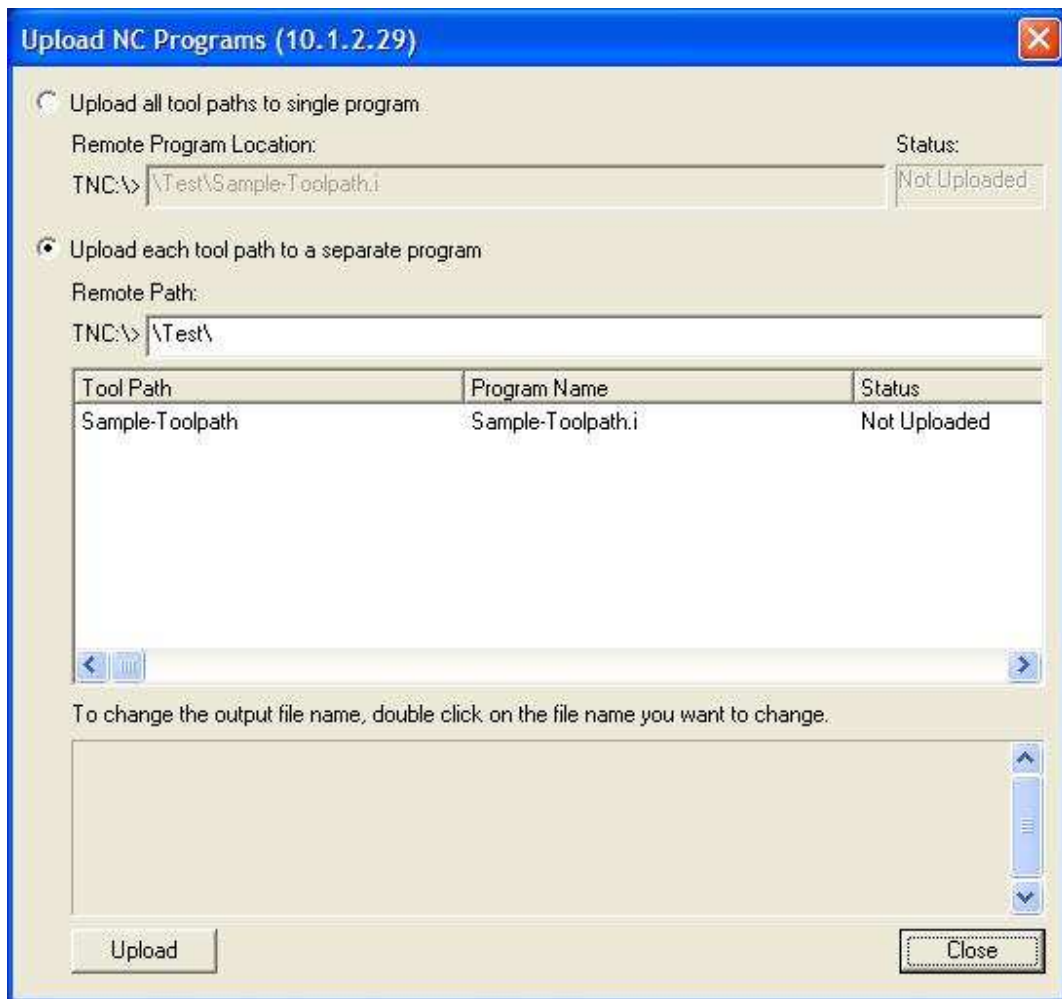


Figure 5: The Upload Dialog

You can use this much like the 'Export G-Code' dialog, but NC programs will be sent directly to your machine's Heidenhain control rather than being saved to your local PC.

Once programs are uploaded you should be able to run them using your Heidenhain control directly.